

Sundress Instructions

Verify material is thick enough to provide dignity. (Hand under one layer and if you cannot see outline of your hand you are good). Refrain from using white background material. (They will be washing often in a dirty river and will never be WHITE again.) Be careful of the print on the dress. Avoid themes with white girls, characters that might be frightening, food pictures (not good if you are starving)... Use $\frac{1}{2}$ or $\frac{5}{8}$ width elastic.

1. Cut material to overall length leaving salvages on the fabric.
2. Sew the back-seam salvages together, creating a tube. Use standard $\frac{5}{8}$ seam allowance on all garments. Press back seam open.
3. To make the hem press $\frac{1}{2}$ inch under around the tube. Fold over again and press. On the opposite side, create the top elastic casing. Press $\frac{1}{4}$ inch under around tube. Then measure and fold over another $1 \frac{1}{2}$ inches. Press.
4. Sew hem and elastic casing at edges. On the casing side, sew an additional line around tube about $\frac{3}{4}$ inch down. This folds elastic in place and creates a ruffle on top.
5. Flatten the dress out on the table with the back seam at one side. Fold over the back seam on top to the front line of the dress. Now the two side center lines are in front of you. Using correct size templet cut armhole. Since the templates were made to be used prior to turning the casing down, please adjust for that by raising the pattern piece an inch above the dress.
6. Measure out 7" and make a mark on the elastic. From that line measure out $7 \frac{1}{4}$ inches and make a draw a line on the elastic. DO NOT CUT. Run

the elastic through the casing continuously both front and back with a large safety pin. You may need to slide the casing and pull the elastic about till you can line up the edge of the casing with the marked line on the elastic. Sew and secure at all four points. (left and right side front, left and right side back). Now you cut the elastic and evenly distribute fabric in the casing over elastic side of dress.

7. Using extra wide bias tape measure cut 2 pieces length from table below. Fold bias tape and half and mark with pin. Locate the middle of the armhole and mark with pin. Attach the bias tape starting in the middle of the underarm and working to end. Be sure the short width side of bias tape is facing the front of the dress. Back tack at top of dress where stress is going to happen. Continue stitching the length of bias tape on until you reach near the end. Stop the machine and leave the work in the machine. Cut the bias tape of an angle downward toward the opening side of bias tape. Fold under to provide a square and clean end. Continue sewing to end and back tack. Repeat on both sides of armhole and both armholes.
8. Pockets. Cut a piece of fabric 6 1/2 inches by 13 inches. Fold in half right sides together. Sew 1/4 inch in along three sides leaving an inch opening in the bottom seam. Nip off extra fabric in corners. Turn right sides out and press. Roll seams if necessary to get a clean edge and press. Position pocket on dress with the folded edge on top. Top stitch pocket on. If you are using one pocket place it on the right side. Two pockets are preferred. Back tack on the top of the pockets that will endure repeated stress.
9. Embellish as you wish. Please do not use ribbons with wire in them, glued pieces or ironed on ornaments. Iron ons may only be used when sewn on. Press your dress, clip threads, inspect to ensure it is your best work. Sew on the Dress a Girl label. Think about the girl that will be receiving this dress. It may well be her first new dress. She will wear it every day for several years.

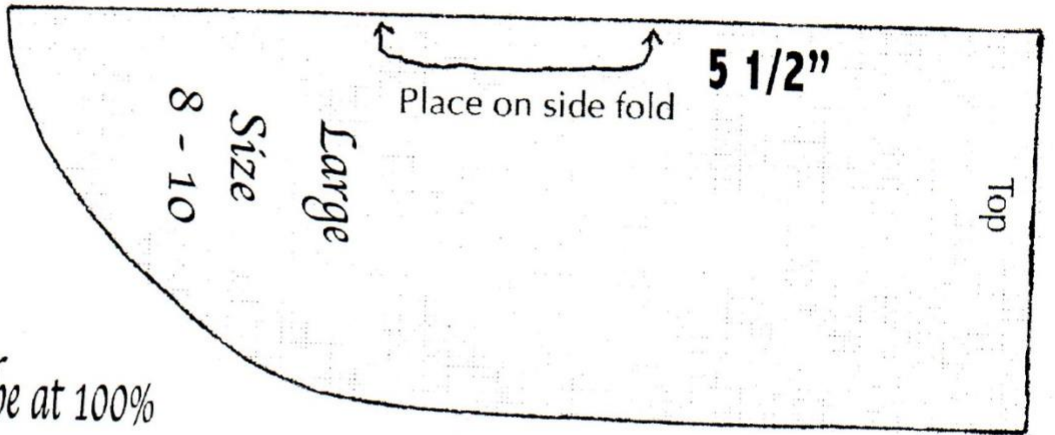
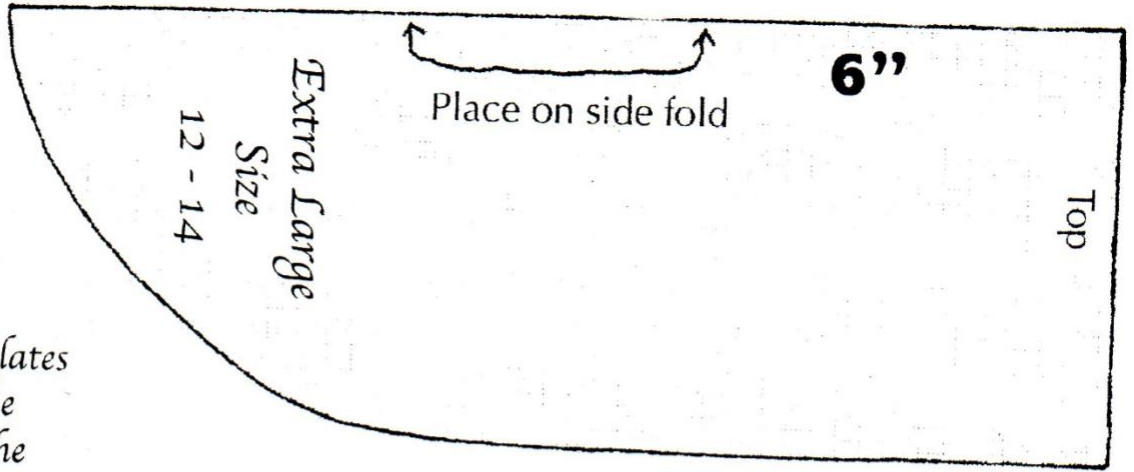
| Size | | Fabric | Finished | Armhole |
|-------------|----|--|----------|----------|
| | | Length x Full Width | Length | Template |
| Extra Small | 0 | 22" x 44" | 19" | A |
| Small | 1 | 24" x 44" | 21" | B |
| | 2 | 26" x 44" | 23" | B |
| Medium | 4 | 28" x 44" | 25" | C |
| | 6 | 30" x 44" | 27" | C |
| | 8 | 32" x 44" | 29" | C |
| Large | 10 | 34" x 44" | 31" | D |
| | 12 | 36" x 44" | 33" | D |
| Extra Large | 14 | 38" x 44"-48" (include slit/pleat in seam) | 35" | E |
| | 16 | 39-41" x 44"-48" (include slit/pleat in seam) | 36-37" | E |

*The finished lengths on this chart are approximate. Size 8, for example could be 28-30".

Bias Tape Measurements

| Size | Bias length cut 2 Double Fold Extra Wide Bias Tape (1/2") |
|--------------|---|
| Size 0 | 27" - 36" |
| Size 1 - 2 | 36-44" |
| Size 4- 8 | 42-44" |
| Size 10 - 12 | 42"- 44" |
| Size 14 - 16 | 42 - 44" |

Please be sure when you print out the templates that they are the same length as the listed measurement.
 6" long for Ex Large
 5 1/2" for Large
 5" for Medium
 4 1/2" for Small
 4" for Baby



Printer Settings must be at 100%

